



**SCHIFF  
SCOUT  
RESERVATION**

**GEOCACHING  
PROGRAM**





# SCHIFF SCOUT RESERVATION GEOCACHING PROGRAM



## INTRODUCTION

This document contains all of the information you need to participate in the *Schiff Scout Reservation Geocaching Program*. This program is maintained by the Sagamore Service Troop – Pine Tree program. It is here for your enjoyment. All we ask is that you follow the rules outlined in this document so that everyone can enjoy the program.

## WHAT IS GEOCACHING?

Geocaching is an entertaining adventure game for **GPS** users. Participating in a cache hunt is a good way to take advantage of the wonderful features and capability of a **GPS** unit. The basic idea is to have individuals and organizations set up caches all over the world and share the locations of these caches on the internet. GPS users can then use the location coordinates to find the caches.

*Note: The Schiff Scout Reservation Geocaching Program is a private program that is not published on an y website. Only scouts and scouters are permitted to participate in the Schiff Geocaching Program. This guide contains all of the information you need to participate in the program.*

**DO NOT, UNDER ANY CIRCUMSTANCES, PUBLISH SCHIFF GEOCACHE INFORMATION ON ANY GEOCACHING WEBSITE. WE DO NOT WANT THE PUBLIC COMING INTO THE CAMP TO FIND THE CACHES.**

The Geocaching program at Schiff is a two -stage program consisting of 15 caches.

### Stage 1: THE SCOUT LAW

12 geocaches, one for each point of the Scout Law. Finding these caches will give the participant directions to the caches in Stage 2.

The caches in this stage are green water bottles.



### Stage 2: THE SCOUT OATH

3 geocaches, one for each point of the Scout Oath.

The caches in this stage are blue water bottles.





## SCHIFF SCOUT RESERVATION GEOCACHING PROGRAM



### HOW DO YOU PRONOUNCE GEOCACHING?

You pronounce it Geo-cashing, like cashing a check.

The word Geocaching broken out is GEO for geography, and CACHING for the process of hiding a cache. A cache in computer terms is information usually stored in memory to make it faster to retrieve, but the term is also used in hiking/camping as a hiding place for concealing and preserving provisions.

So what's the big deal? You gave me the coordinates so I know where it is ; seems pretty easy.

It is deceptively easy. It's one thing to see where an item is, it's a totally different story to actually get there.

### WHAT IS A GPS DEVICE?

A GPS unit is an electronic device that can determine your approximate location on the planet. Coordinates are normally given in Longitude and Latitude. You can use the unit to navigate from your current location to another location. Some units have their own maps, built -in electronic compasses, voice navigation, depending on the complexity of the device.

### HOW DO I USE A GPS UNIT FOR GEOCACHING?

To play, you must know how to enter waypoints into your GPS unit. We have provided a file with waypoints that can be uploaded into your GPS.

### WHAT ARE THE RULES IN GEOCACHING?

Geocaching is a relatively new phenomenon. Therefore, the rules are very simple:

1. Take something from the cache.
2. Leave something in the cache.
3. Write about it in the logbook.
4. Leave the cache where you found it.

### WHAT IS IN THE CACHES?

The caches at Schiff are water proof bottles containing the following items:

1. A log book. This is a spiral pad. The logbook contains information from the founder of the cache and notes from the cache's visitors. The logbook can contain much valuable, rewarding, and entertaining information, and even jokes written by visitors. The logbooks in Stage 1 caches contain coordinates to Stage 2 caches. If you get some information from a logbook you should give some back. At the very least you can leave the date and time you visited the cache.
2. A pen for writing on the log book.



## SCHIFF SCOUT RESERVATION GEOCACHING PROGRAM



3. Since the theme of the program is the Scout Law and Scout Oath, each cache has a message pertaining to a particular point of the Scout Law or Oath.
4. If you find a Stage One (Scout Law) cache, the log book will contain a portion of the latitude or longitude of one of the Stage Two (Scout Oath) caches. In order to find the second stage caches, you must find all of the Stage One caches and piece together the latitude and longitude of the Stage Two caches.<sup>i</sup>

***DO NOT REMOVE THE LOG BOOK, PEN, OR SCOUT LAW/OATH DESCRIPTION FROM THE CACHE. IF YOU DO, OTHER PEOPLE WILL NOT BE ABLE TO PARTICIPATE IN THE PROGRAM.  
YOU ARE ON YOUR HONOR.***

5. Anything else you find in the cache can be taken, as long as you leave something in return – you take something and you leave something. Exactly what you find in the cache is up to the people who found the cache before you.

What should you *not* leave in a cache? Use your common sense. Explosives, ammo, knives, drugs, and alcohol shouldn't be placed in a cache. Respect the local laws. All ages of people hide and seek caches, so use some thought before placing an item into a cache. ***Food items are ALWAYS A BAD IDEA.*** Animals have better noses than humans, and in some cases, caches have been chewed through and destroyed because of food items in a cache. Please do not put food in a cache.

### WHERE ARE CACHES FOUND?

The caches are hidden all around the camp. We guarantee you will visit parts of Schiff you have never been in before. Unless you are very, very good, you will not be able to find all of the caches in a single day. While we tried not to make this too difficult, we did want to make it challenging. Therefore, the caches are usually hidden around prominent terrain features, but they are hidden. We like to put caches in the hollow of a tree or in a hole in the ground ... you get the idea. In most cases, the caches are not visible unless you look into a tree hollow or hole in the ground. You should also know that your GPS will only get you so far. GPS units are usually accurate to within, say 30 feet. That means, the GPS will get you to into the correct area, but will not lead you right to the cache. For that you need sharp eyes. We have provided clues and photos if you wish to use them. Once you get into the area, start looking for places that a cache could be hidden.

### CAN I MOVE A CACHE ONCE I FIND IT?

# ***NO!***

You enjoy playing this game, so do other people. If you move the cache, you ruin the game. Remember, a Scout is Courteous. Have consideration for everyone else who wants to have fun with Geocaching. ***Leave the caches where you find them.***



## SCHIFF SCOUT RESERVATION GEOCACHING PROGRAM



### CACHE LOCATIONS

<u>CACHE</u>	<u>LATITUDE</u>	<u>LONGITUDE</u>	<u>CLUE</u>
<b>STAGE 1</b>	<b>THE</b>	<b>SCOUT</b>	<b>LAW</b>
TRUSTWORTHY	40° 56.052' N	72° 49.566' W	15 feet off the Sunken Lake trail
LOYAL	40° 56.390' N	72° 49.711' W	In the hollow of a tree ½ way down the gulch wall near the bridge.
HELPFUL	40° 56.259' N	72° 49.588' W	About 70 feet off the road.
FRIENDLY	40° 55.933' N	72° 49.978' W	By the concrete slab (old latrine).
COURTEOUS	40° 56.150' N	72° 49.730' W	On the side of the lake where the grass is green.
KIND	40° 56.073' N	72° 49.972' W	4 feet off the ground. In a tree at the post where the road bends.
OBEDIENT	40° 56.213' N	72° 49.658' W	Near the pump house. Don't look down!
CHEERFUL	40° 56.227' N	72° 50.039' W	2 feet off the ground, down hill from the foundation of the old Pioneer dining hall.
THRIFTY	40° 55.871' N	72° 50.040' W	Small stump 25 feet off the trail.
BRAVE	40° 55.913' N	72° 49.819' W	In the hollow of a tree 5 feet off the trail.
CLEAN	40° 56.392' N	72° 49.520' W	Waist high toward the property line by the cemetery.
REVERENT	40° 56.633' N	72° 49.977' W	In the hollow of a tree, 85 feet off the low point in the trail.



**SCHIFF SCOUT RESERVATION  
GEOCACHING PROGRAM**



**CACHE**

**LATITUDE**

**LONGITUDE**

**CLUE**

**STAGE 2**

**THE**

**SCOUT**

**OATH**

*We don't tell you where these are! If you want to find them, find the "Scout Law" caches that contain the clues to where these caches are.*

DUTY TO GOD

DUTY TO  
COUNTRY

DUTY TO SELF

Latitude & Longitude:

Symbol	Meaning
degrees	°
minutes	'



## SCHIFF SCOUT RESERVATION GEOCACHING PROGRAM



### WHAT DO I DO IF I FIND OUT THAT A CACHE HAS GONE MISSING?

If you visit a cache location and the cache is missing, leave a message with the camp ranger. We will check the cache locations once a year to insure the caches have not been moved or stolen. Remember, these caches are not “easy” to find. Before you report one missing, look for it. The caches do not jump out and shout their location; it takes effort to find them.

### RECOMMENDATIONS

When trying to find a location, it is helpful whenever possible to get on one axis (either latitude or longitude) and walk that axis until you find the intersecting axis. Once you find the intersecting point, you will be within roughly 30 feet of the cache: start hunting! Using the clues and pictures is not cheating.

Take a map and compass along for this exercise. Although Geocaching is basically a GPS based game, a map and compass can be very useful when you are trying to close in on a cache.

Wear long sleeve pants, a long sleeve shirt and use bug repellent. You will be bush-whacking, and there are plenty of ticks and chiggers in the camp.

### WE WANT YOUR FEED BACK

This is the first Geocaching program at Schiff. We want your feedback to help us make this an enjoyable program. Please email your comments to [SSRGeocaching@gmail.com](mailto:SSRGeocaching@gmail.com) Put the words “SCHIFF GEOCACHING FEEDBACK” in the subject line.

### PHOTOS AND MAP

The following pages contain pictures and a map to assist in locating caches. You may choose not to use these aids. It is up to you. There is nothing wrong with using them.

### CREDITS

#### SAGAMORE SERVICE TROOP

Glenn Kugler

Steve Gershowitz

Jim Guastavino



## SCHIFF SCOUT RESERVATION GEOCACHING PROGRAM



### PHOTOS

You can use these photos to help you find caches if you wish. Please note that the photos do not necessarily show a picture of where the cache is hidden, but show a prominent or unique terrain feature in the area of the cache. The terrain pictured is visible from the cache. Do not try to judge distances from the photographs. The photos provide no more than a general visual reference to the area.



TRUSTWORTHY



LOYAL



HELPFUL



FRIENDLY



COURTEOUS



KIND





# SCHIFF SCOUT RESERVATION GEOCACHING PROGRAM



OBEDIENT



CHEERFUL



THRIFTY



BRAVE



CLEAN



REVERENT



# SCHIFF SCOUT RESERVATION GEOCACHING PROGRAM



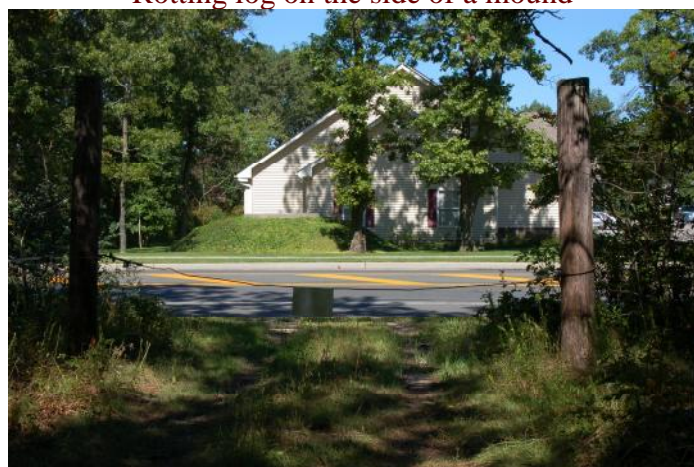
## DUTY TO GOD

By post # 10 along the lake road in the pine grove.



## DUTY TO COUNTRY

Rotting log on the side of a mound



## DUTY TO SELF

Hollow of a dead tree by the camp gate from Rte. 25A



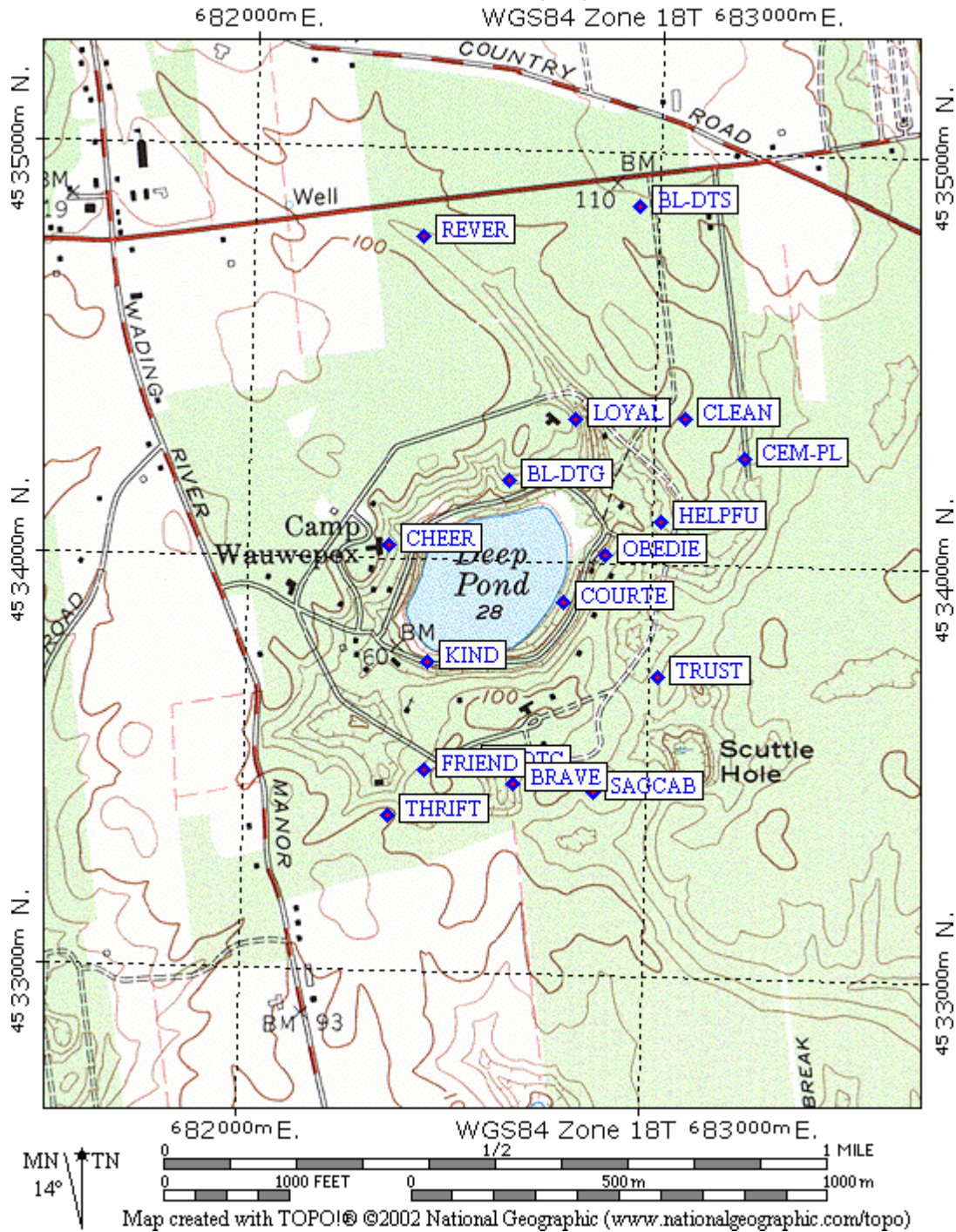
# SCHIFF SCOUT RESERVATION GEOCACHING PROGRAM



## MAP

You may use the following map to help locate caches.

CSR Geocach 09/17/06



<sup>i</sup> Each Stage One cache contains a piece of the latitude and longitude of one of the Stage Two caches. Latitude and longitude are expressed in degrees and minutes. For example, latitude and longitude of Hickox Hall is 40° 56.23' N, 72° 49.47' W



## SCHIFF SCOUT RESERVATION GEOCACHING PROGRAM



---

The clue will tell you what cache the clue pertains to (Duty to God, Duty to Country, Duty to Self) and what piece of the location the clue represents (latitude or longitude). For example, clues pointing to Hickox Hall would be as follows:

Hickox Hall – Latitude N 40 degrees

Hickox Hall – Latitude N 56.23 minutes

Hickox Hall – Longitude W 72 degrees

Hickox Hall – Longitude W 49.47 minutes

By finding the *four* Stage 1 Caches with these clues, the participant will have the coordinates of one Stage 2 cache. Each location contains 4 parts. There are three Stage Two locations. Therefore, to find all Stage Two caches, you need 12 clues. There are 12 Stage One caches. Each Stage One cache will contain a piece of the clue to a Stage Two cache. To find a single Stage Two cache, you will have to locate the correct four Stage One caches containing the clues to that Stage Two cache.