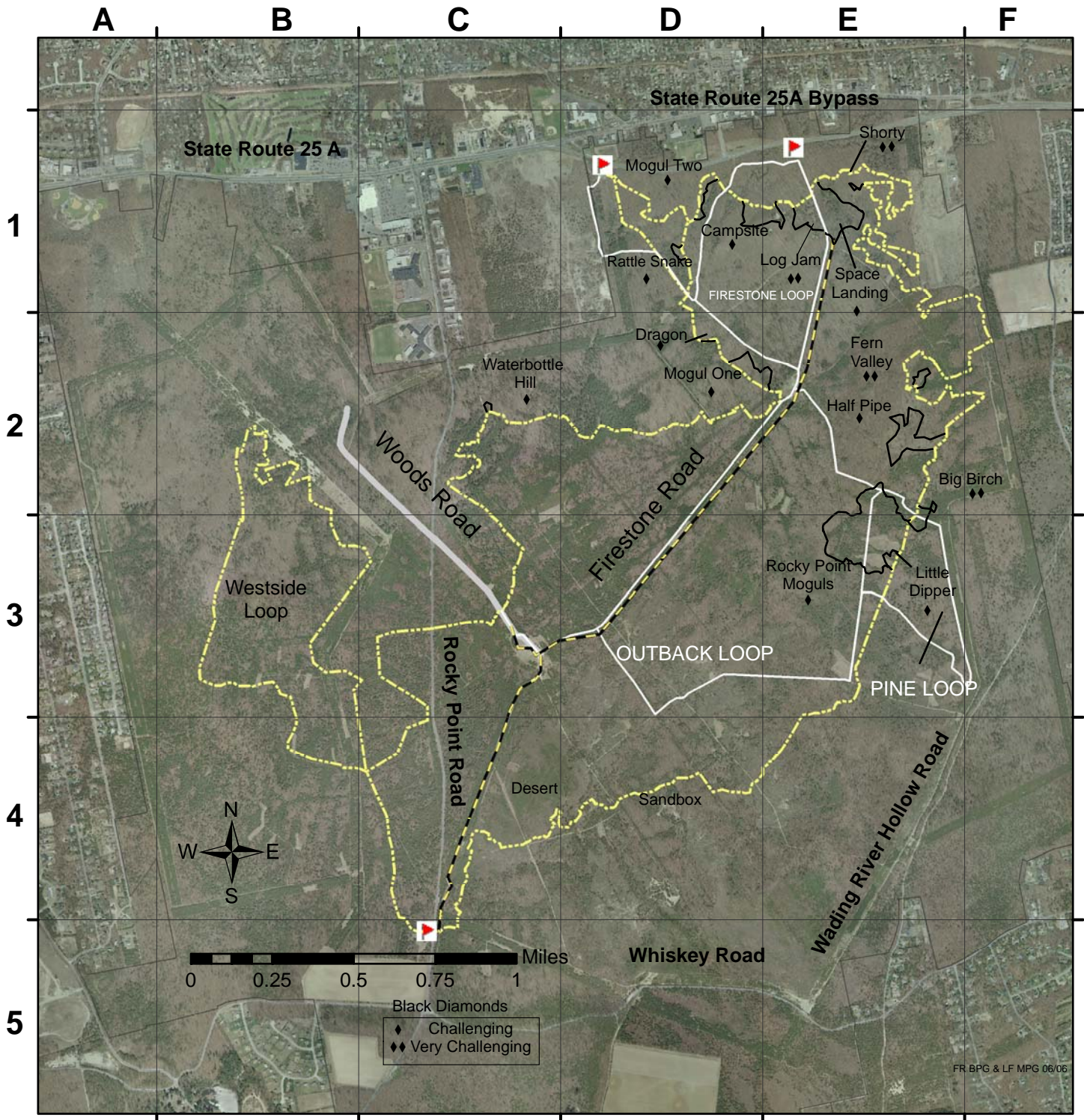




NEW YORK STATE Department of Environmental Conservation Rocky Point Mountain Bike Trails



Intermediate & Advanced Trails

Challenging singletrack (one-way) with several uphill climbs and numerous turns.

Main Loop approx. 13 miles
Optional Westside Loop 4 miles
Advanced Black Diamond Loops always start and return to the Main Loop.

Follow the Yellow Trail Markers

Family Trails (Beginner)

Firestone Loop 3.0 miles
Pine Loop 4.8 miles
Outback Loop 5.8 miles

Follow White Trail Markers

For any emergencies DIAL 911, request a Forest Ranger, if available. Give grid location as indicated on nearest trail marker (i.e. A2-10).

Helmet, Eye Protection and DEC Permit Required
Call 631-444-0273 For Information

Legend

- Family Trail(Beginner)
- Main Loop (Intermediate)
- Westside Loop (Intermediate)
- Black Diamond Trail (Advanced)
- Bike Trailhead Parking lots
- Bail-out Trail

FR BPG & LF MPG 06/06